



www.osee-dig.com
www.oseeamericas.com

BCM Series Full HD Broadcast LCD Monitor



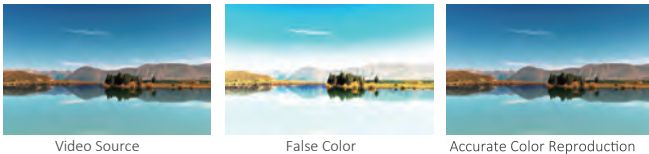
Our BCM Series provides color reproduction and uniformity to meet any application for broadcast monitoring or film production. Each model features 1920x1080 pixel to pixel IPS LED panels plus our 12bit advanced image processing engine, and 3D-LUT color calibration technology to deliver precise duplication of broadcast ITU-709/EBU/SMPTE-C color gamut recommendations.

Accurate Color Reproduction

Highlights

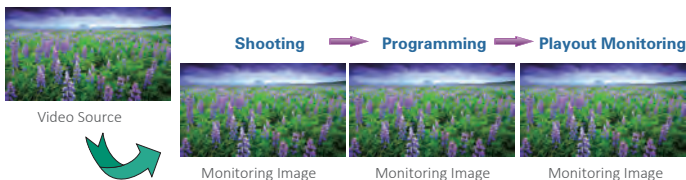
RGB Modulated Backlight Technology

The BCM-156 and BCM-170 exceed standards required for accurate color reproduction of color-critical applications required in set lighting design, DP evaluation, talent monitoring, camera shading, on set monitoring and switched program or transmission quality of signal.



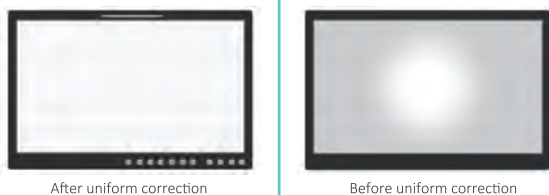
Color Uniformity Calibration

Each unit undergoes a rigorous uniformity calibration in our factory, ensuring "out of the box" color profiling for image evaluation required in all processes of film and video production.



Uniform Correction

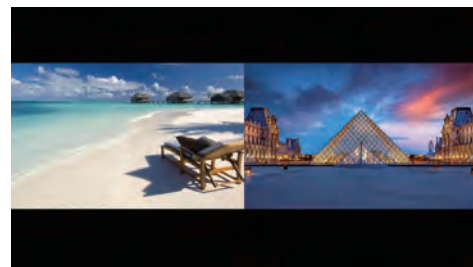
Native LCD panel has luminance variation around 15%, which is larger than the requirement. By using multipoint uniform correction, BCM Series have luminance variation less than +/-5% and chrominance variation less than $4\Delta u^*v^*$.



Reliable Performance

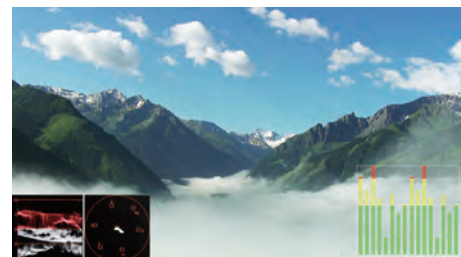
All the technical specifications of BCM Series have passed rigorous testing by China's Metrology and Test Center of Radio and Television State Administration of Radio, Film and Television.

Dual-Screen Display (2Ch 3G-SDI simultaneous display)



Waveform/ Vector/Audio Level Meter Display

Each BCM model includes analytic tools of waveform, vector and audio level display.



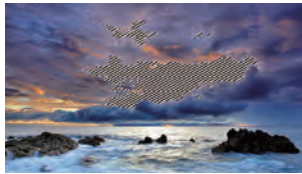
BCM Series Full HD Broadcast LCD Monitor



Focus Assist / Luma Zone



Focus Assist



Luma Zone

AFD Function (Active Format Description)

AFD is automatically sensed in the SDI video and describes the "area of interest" within the scan. This feature is essential when signals are simultaneously required for SD and HD production.



Other Functions

Various Markers

De-interlacing Display

Blue Only

Audio Level Meter Display

Monochrome Mode

Time Code Display

Pixel-to-Pixel Display

H/V Delay

Signal Format

Input Signal	SDI	Video, Y/C	YPbPr	HDMI
PAL		o		
NTSC		o		
480/59.94i,60i	o		o	o
576/50i	o		o	o
480/59.94p,60p			o	o
576/50p			o	o
720/23.98p,24p	o		o	o
720/25p	o		o	o
720/29.97p,30p	o		o	o
720/50p	o		o	o
720/59.94p,60p	o		o	o
1080/23.98p,24p	o		o	o
1035/59.94i,60i	o		o	o
1080/150i	o		o	o
1080/59.94i,60i	o		o	o
1080/23.98p,24p	o		o	o
1080/25p	o		o	o
1080/29.97p,30p	o		o	o
1080/50p	o		o	o
1080/59.94,60p	o		o	o

Input Signal	DVI-D
640×480(60Hz)	o
800×600(60Hz)	o
1024×768(60Hz)	o
1280×1024(60Hz)	o
1360×768(60Hz)	o
1440×900(60Hz)	o
1400×1050(60Hz)	o
1600×1200(60Hz)	o
1680×1050(60Hz)	o
1920×1080(60Hz)	o
1920×1200(60Hz)	o

*Specifications are subject to change without notice.

OSEE TECHNOLOGY LTD.

Add: No.22 Building, No.68 Zone, Beiqing Road, Haidian District, Beijing 100094 China

Tel: +8610 6243 4168

Fax: +8610 6243 4169

E-mail: sales@osee-dig.com

Specifications

Panel	Model			
	BCM-156	BCM-170	BCM-215	BCM-230
Size	15.6"	17"	21.5"	23"
Resolution	1920×1080			
Color Depth	10 bit	10 bit	8 bit	8 bit
Backlight	RGB LED	RGB LED	WLED	WLED
Viewing Angle	178° ×178°	178° ×178°	178° ×178°	178° ×178°
Brightness	210cd/m ²	350cd/m ²	250cd/m ²	250cd/m ²
Contrast	700:1	1000:1	1000:1	1000:1
Input Terminals				
Composite	BNC (×1), 1Vp-p+/-3dB sync negative			
3G/HD/SD-SDI	BNC (×2), 800mVp+/-10%			
HDMI	HDMI Type-A, compatible with DVI-D			
YPbPr	BNC (×3), can be configured as composite or Y/C			
Audio	2 CH Analog stereo, 5dBu, Impedance ≥ 47K, RCA (×2 pair)			
Output Terminals				
Composite	BNC (×1), loop through, Automatic termination			
3G/HD/SD-SDI	BNC (×2), 800mVp-p+/-10%, Active loop through			
YPbPr	BNC (×3), loop through, Automatic termination			
Audio	1 CH Analog stereo, 5dBu, Impedance ≤ 500Ω, RCA (×1 pair)			
Earphone	Stereo mini jack (×1)			
Speaker	5.0W (L) +5.0W (R)			
External Control				
GPI	6 GPI Input, RJ45 (×1)			
RS485	RS485, can be cascaded, RJ45 (×2)			
Ethernet	10/100M Adaptive, RJ45 (×1)			
General				
Power Supply	External DC 12V/5A			
Power Consumption	25W	28W	30W	35W
Operating Temperature	0°C to 35°C (32° F to 95° F) Recommended: 20° C to 30° C (68° F to 86° F)			
Operating Humidity	20% to 80% no condensation			
Weight (with stand)	5.0Kg (11.0lbs)	5.7Kg (12.6lbs)	6.5Kg (14.3lbs)	8.0Kg (17.6lbs)
Accessories	Power Cord / Power Adapter			
Drive system	a-Si TFT active matrix			
Response time	20 ms			
Tally	Tally lamp mounted in the front panel of the monitor			
Tally Input	GPI Input			
Aspect ratio	16:9 (365mm X 205mm)			